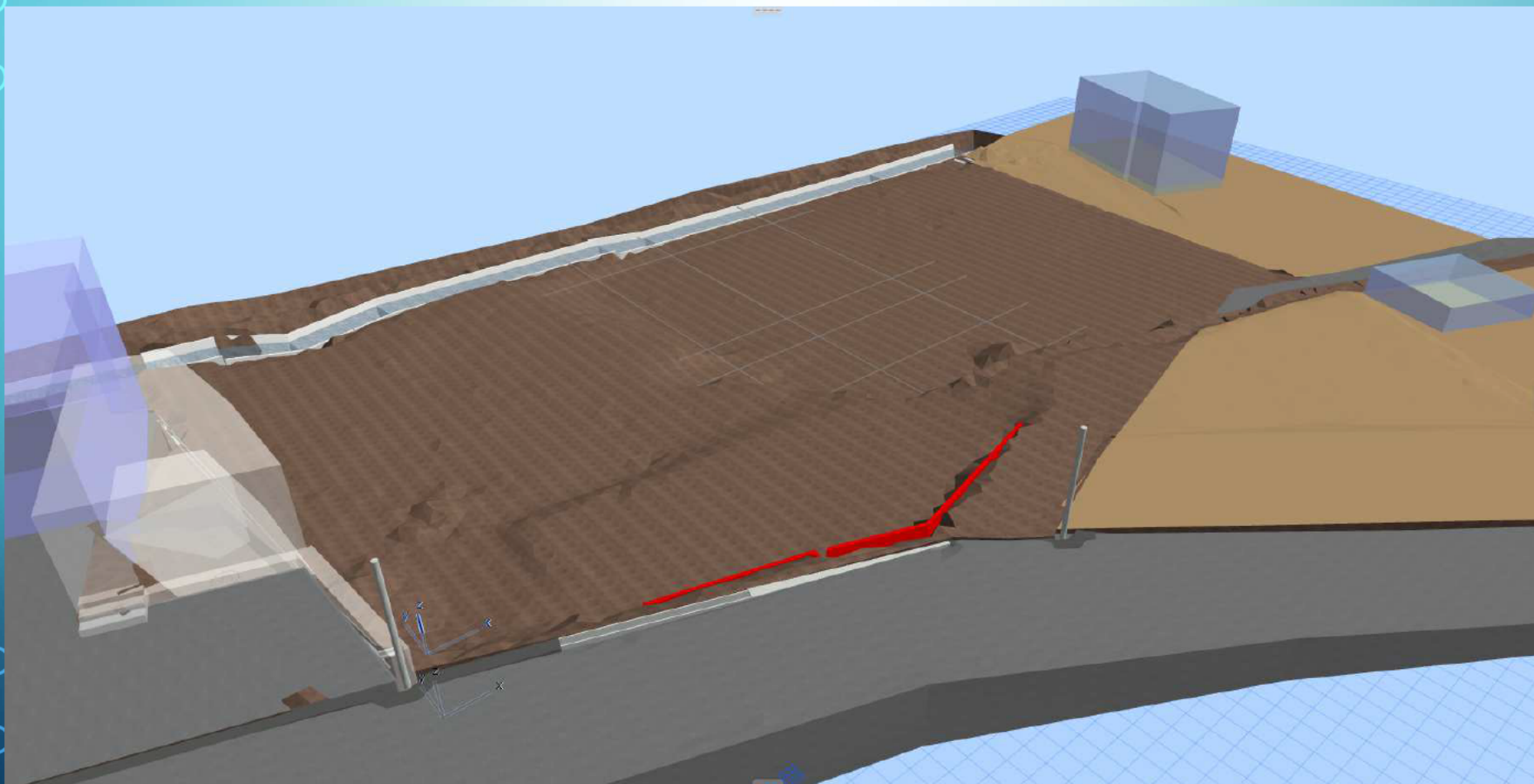


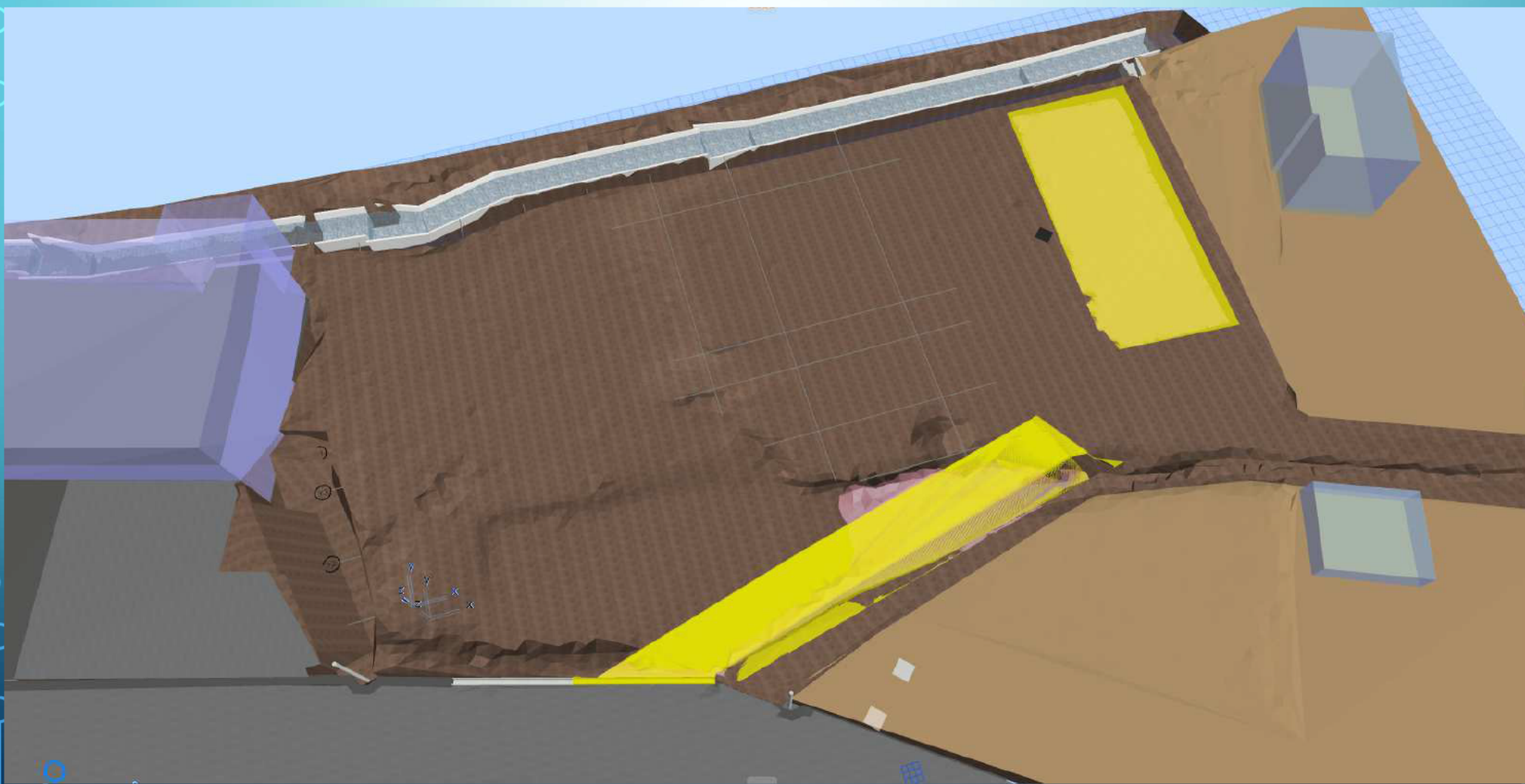
株式会社 [REDACTED] 上水野町
工場新築工事

ステップ図

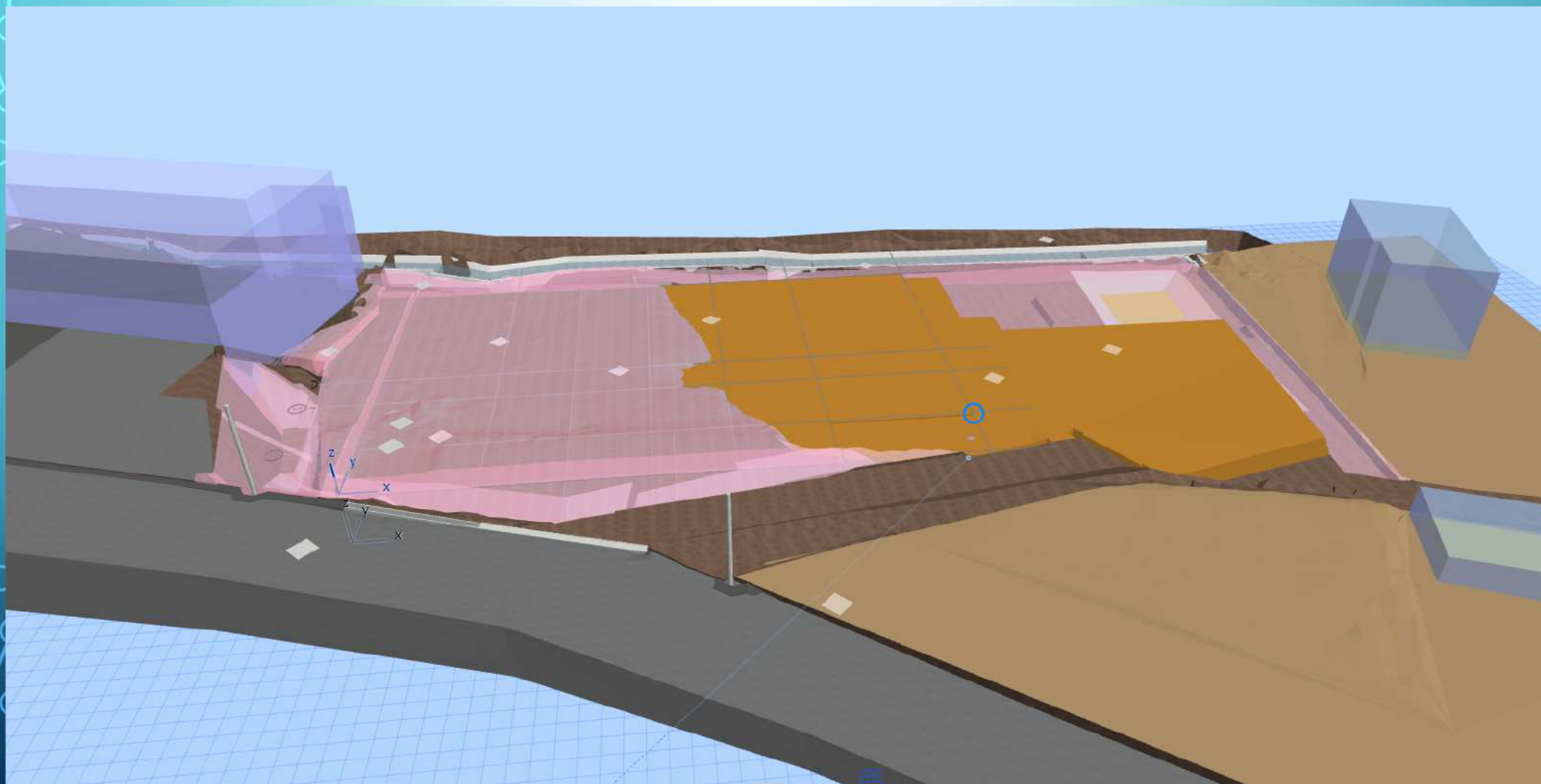
着工時



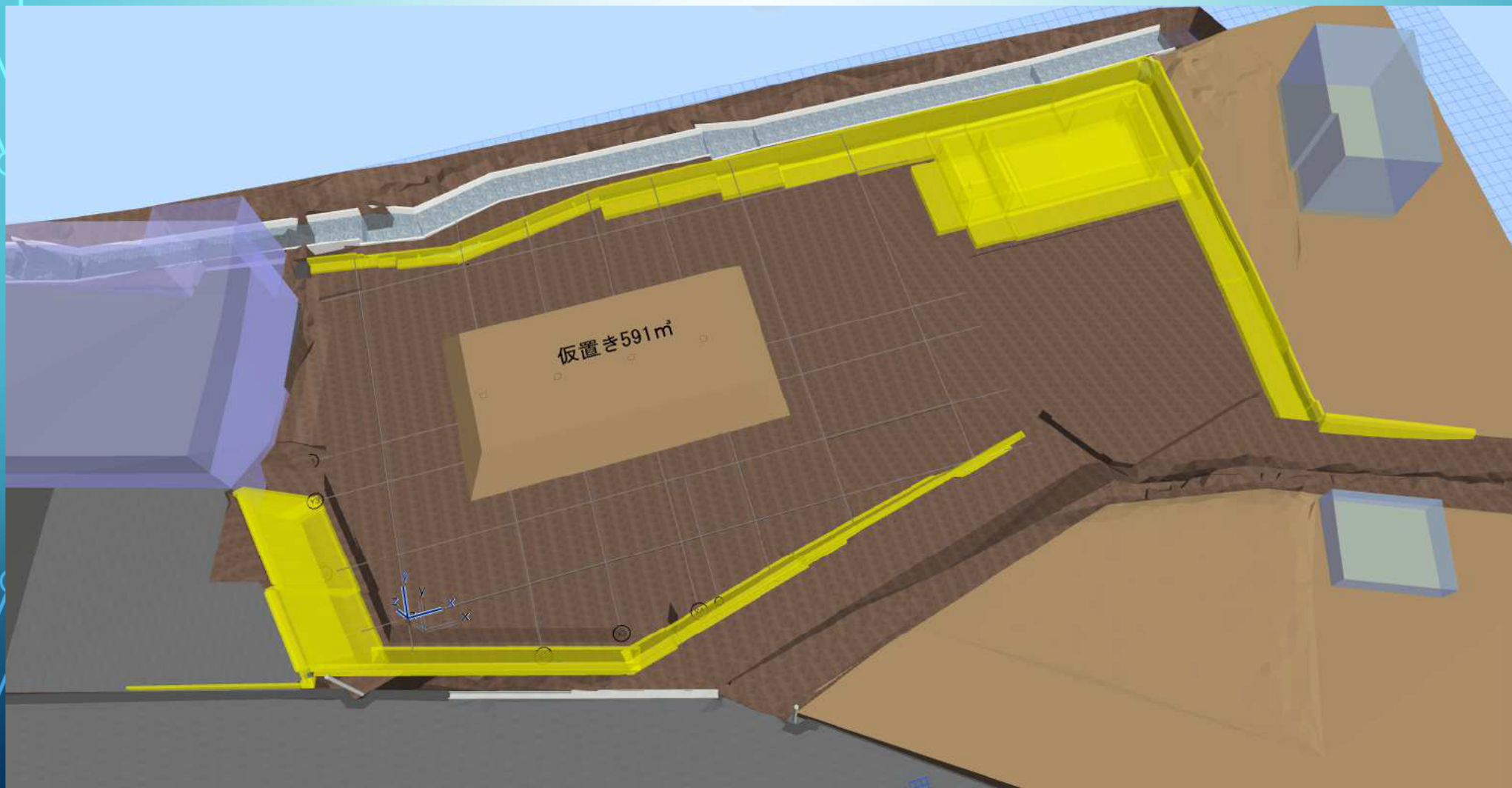
乗入承認工事 沈砂池 スロープ造成



擁壁掘削 南地盤鋤取り



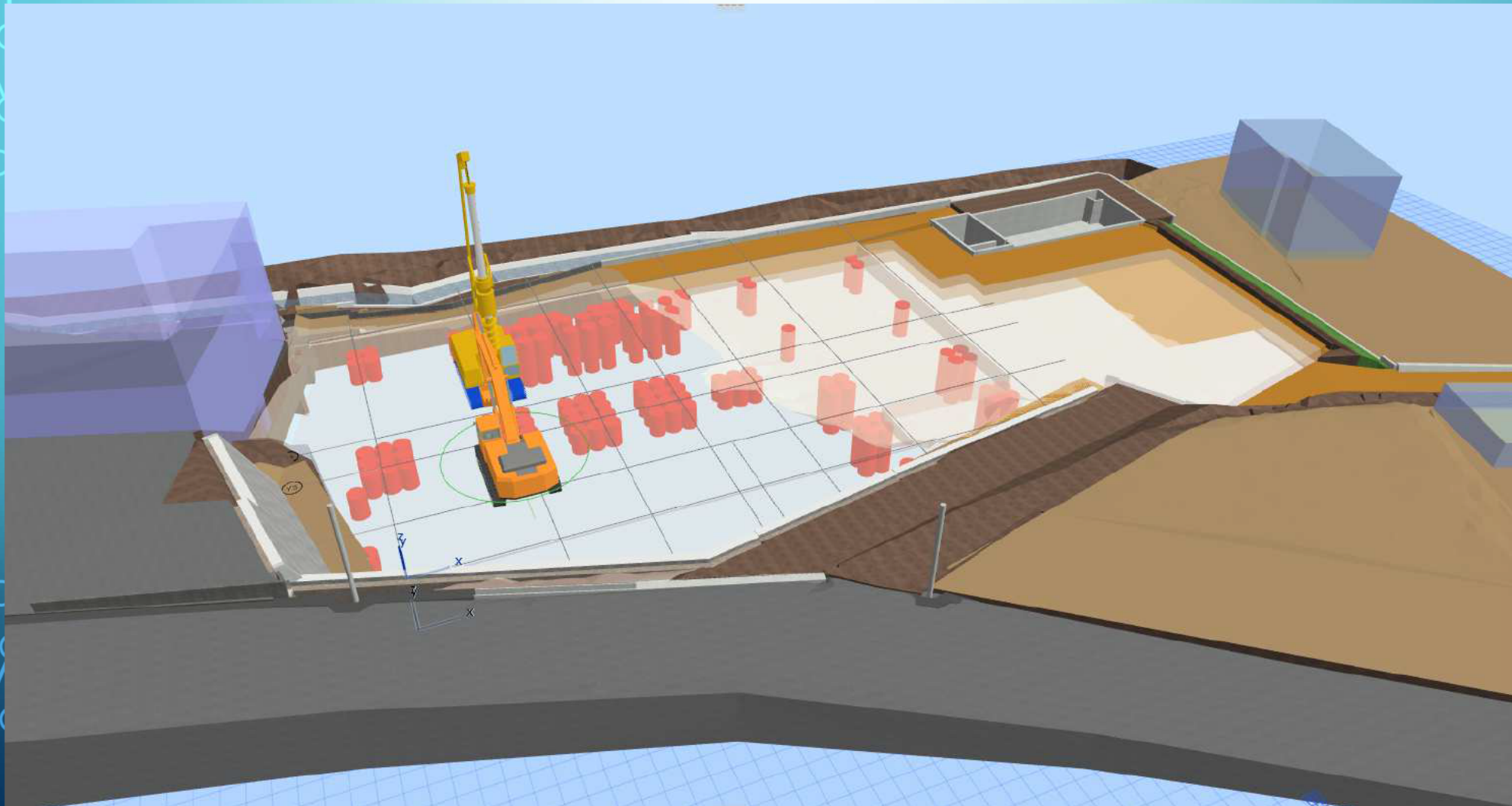
擁壁 間地ブロック施工



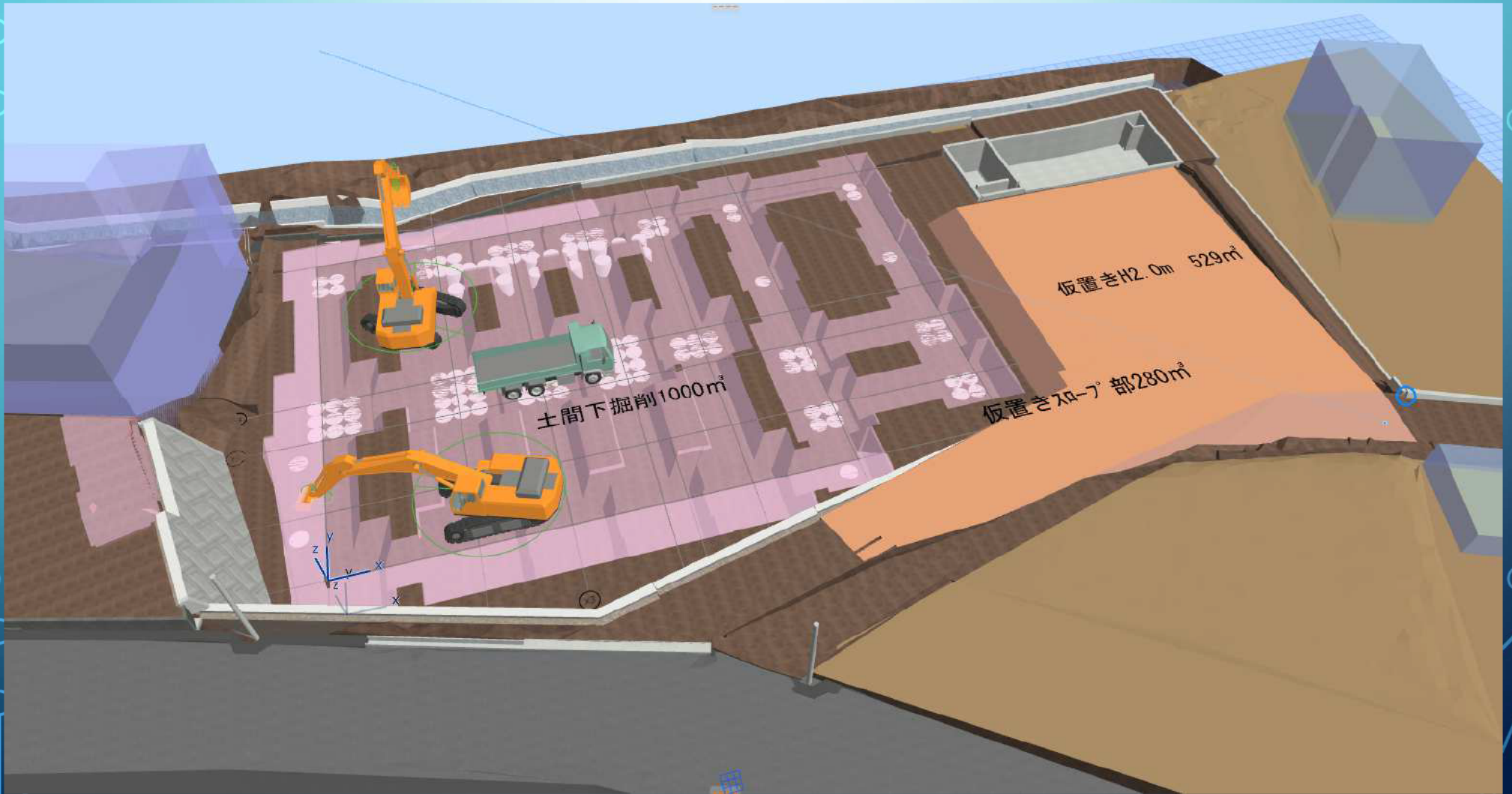
擁壁 間地ブロック部埋戻し



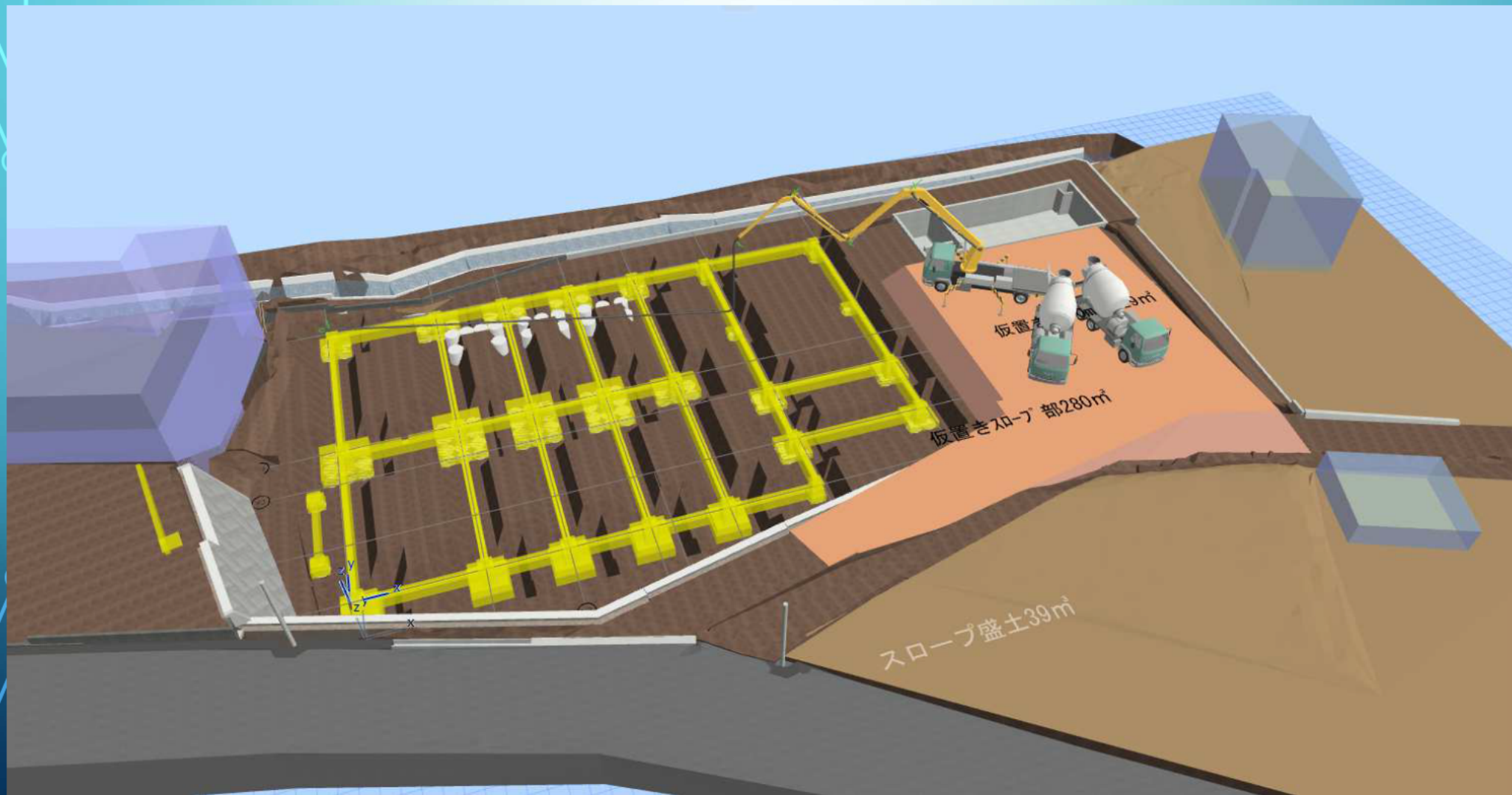
柱状改良工事



本体基礎掘削



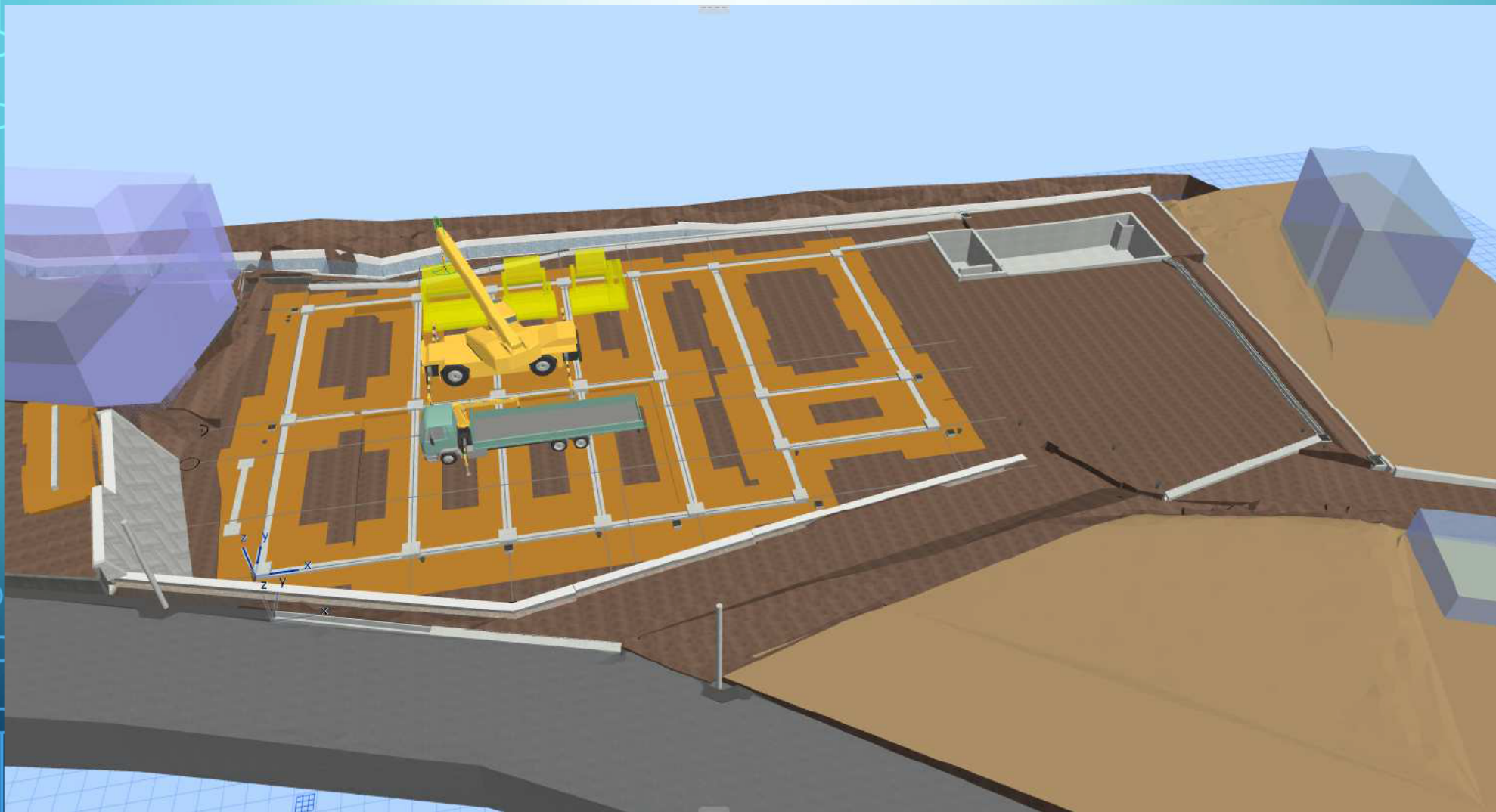
本体基礎工事



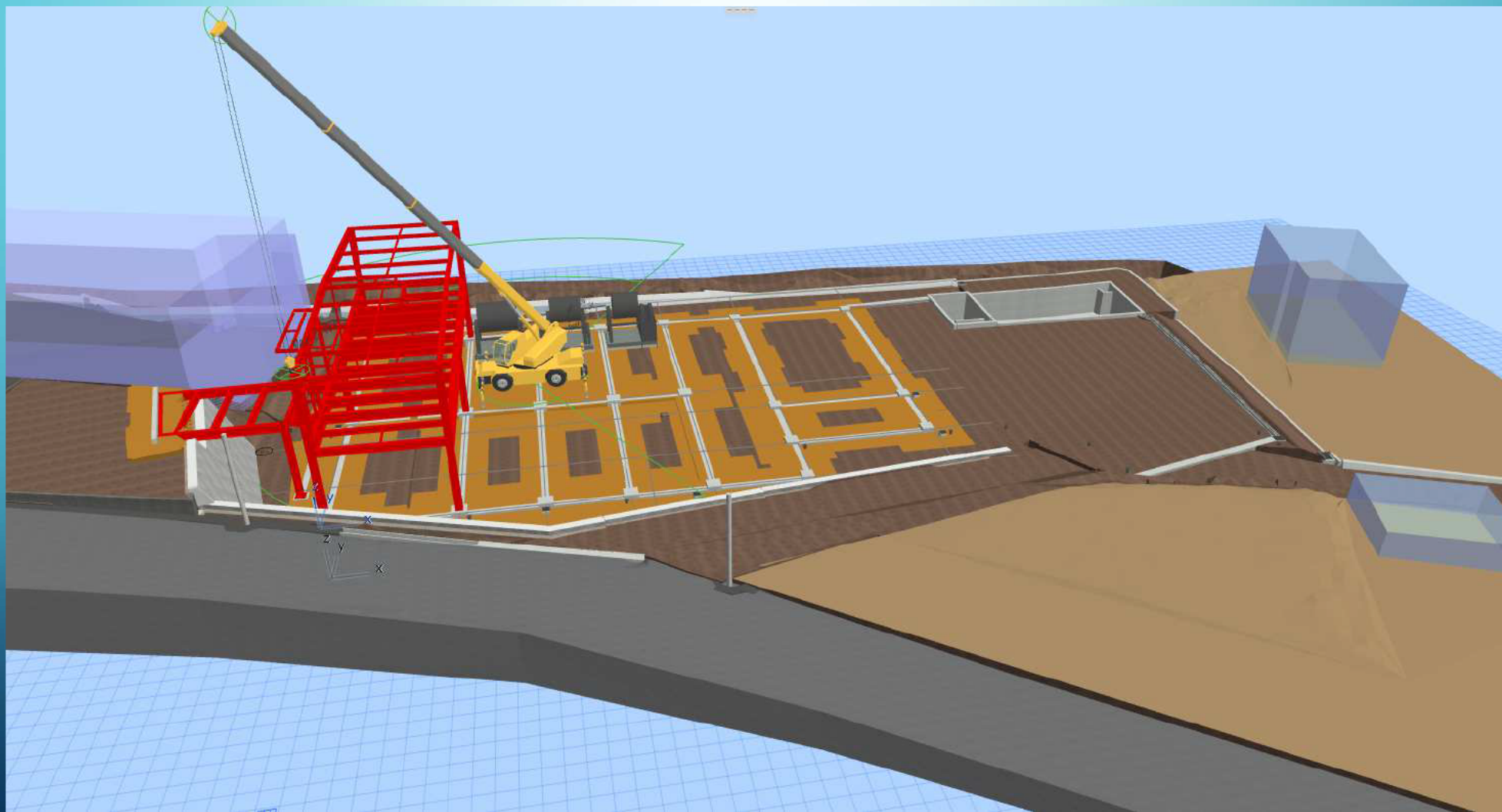
埋戻し 地盤改良 埋設配管 雨水側溝設置



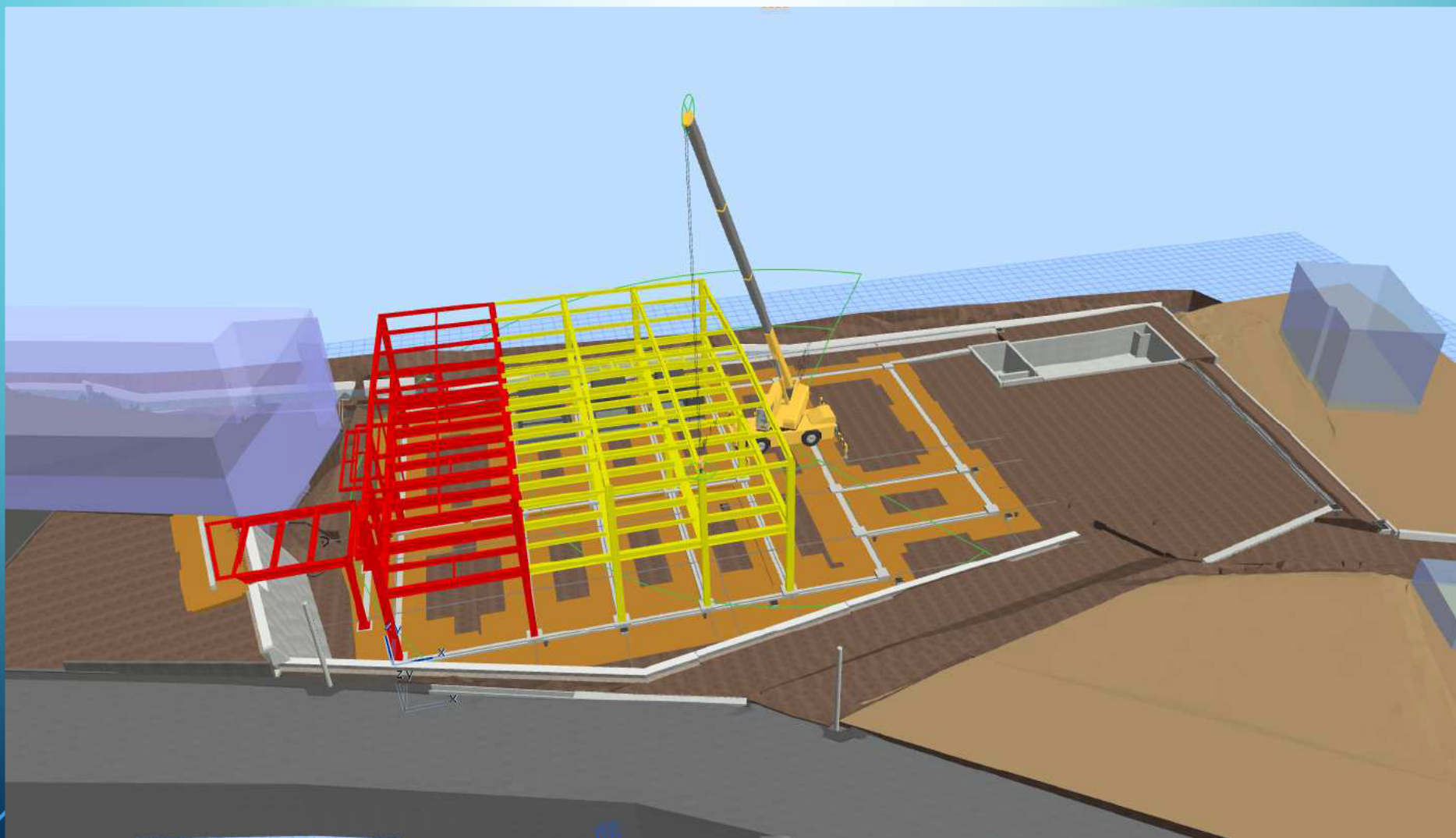
ボールミル設置(施主工事)



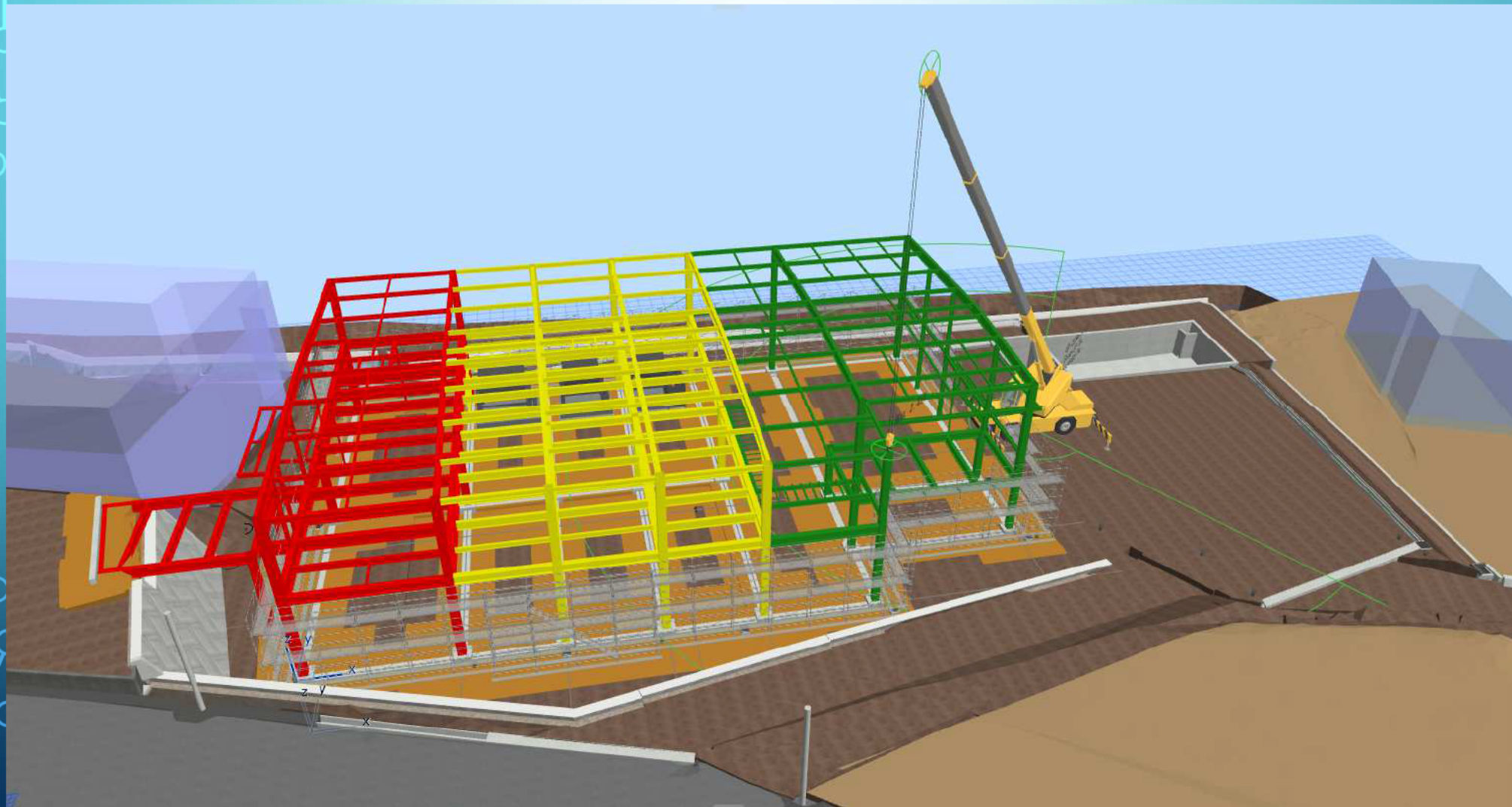
鐵骨建方 ①工区



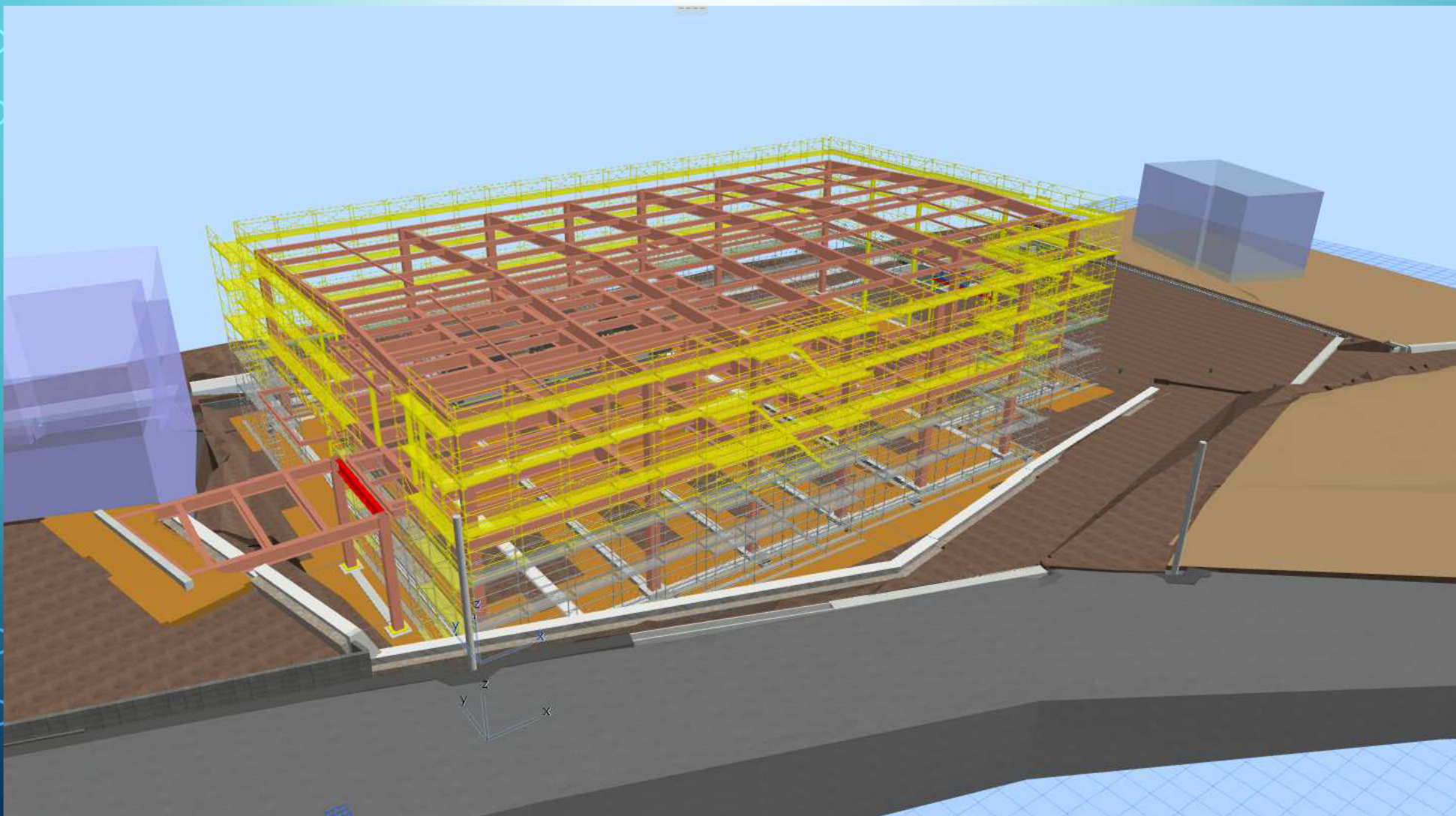
鐵骨建方 ②工区



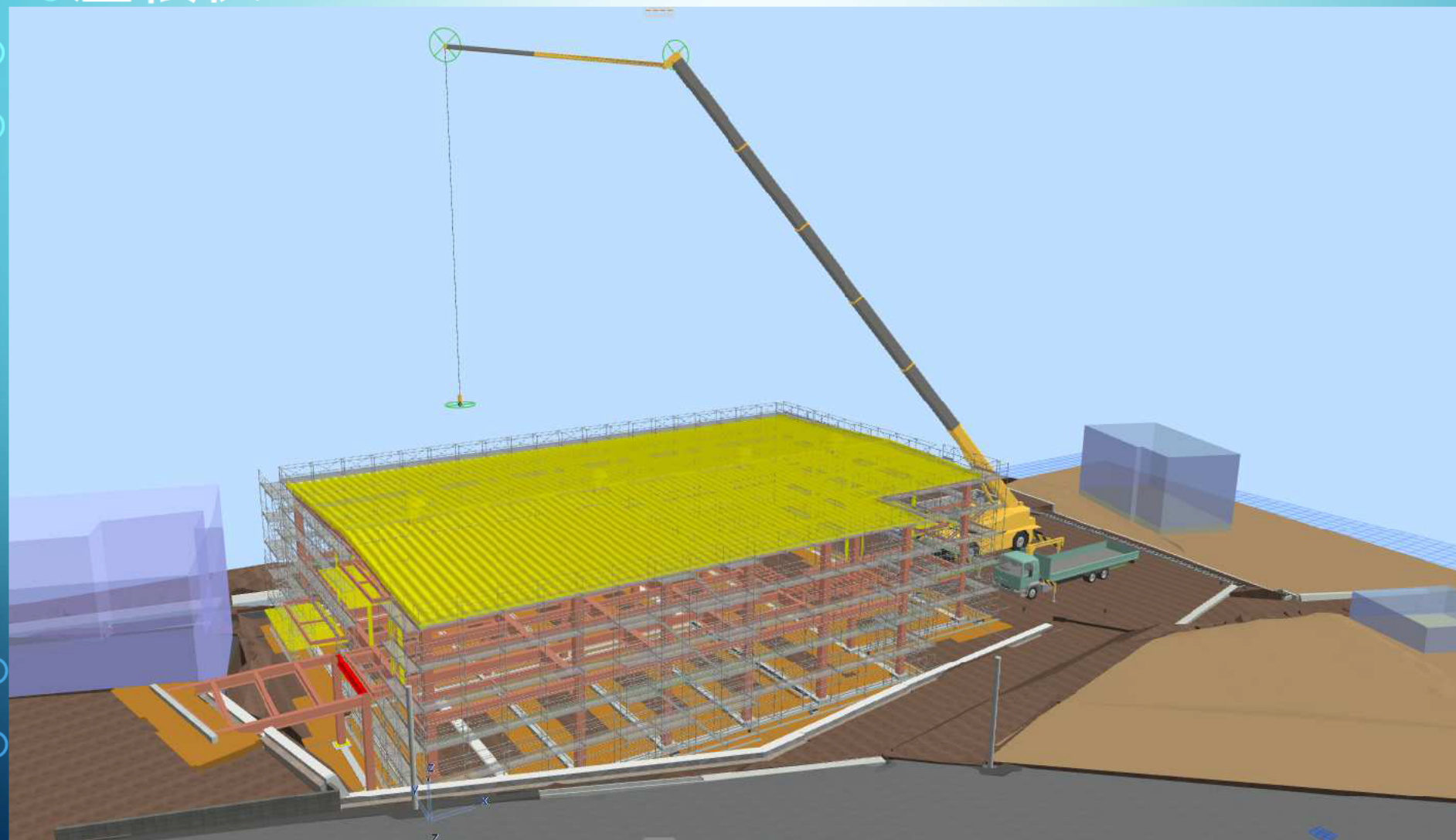
鐵骨建方 ③工区



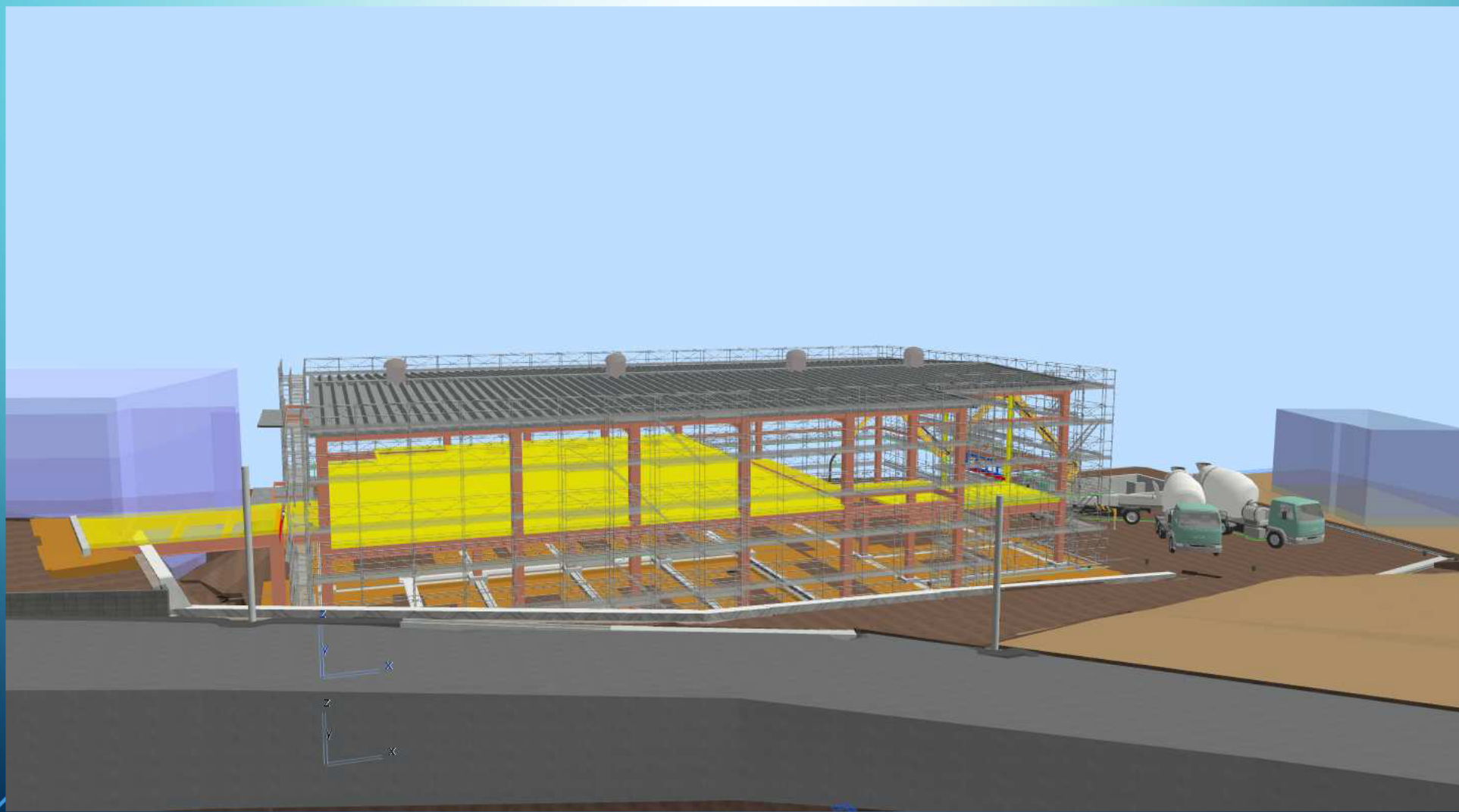
外部足場架け



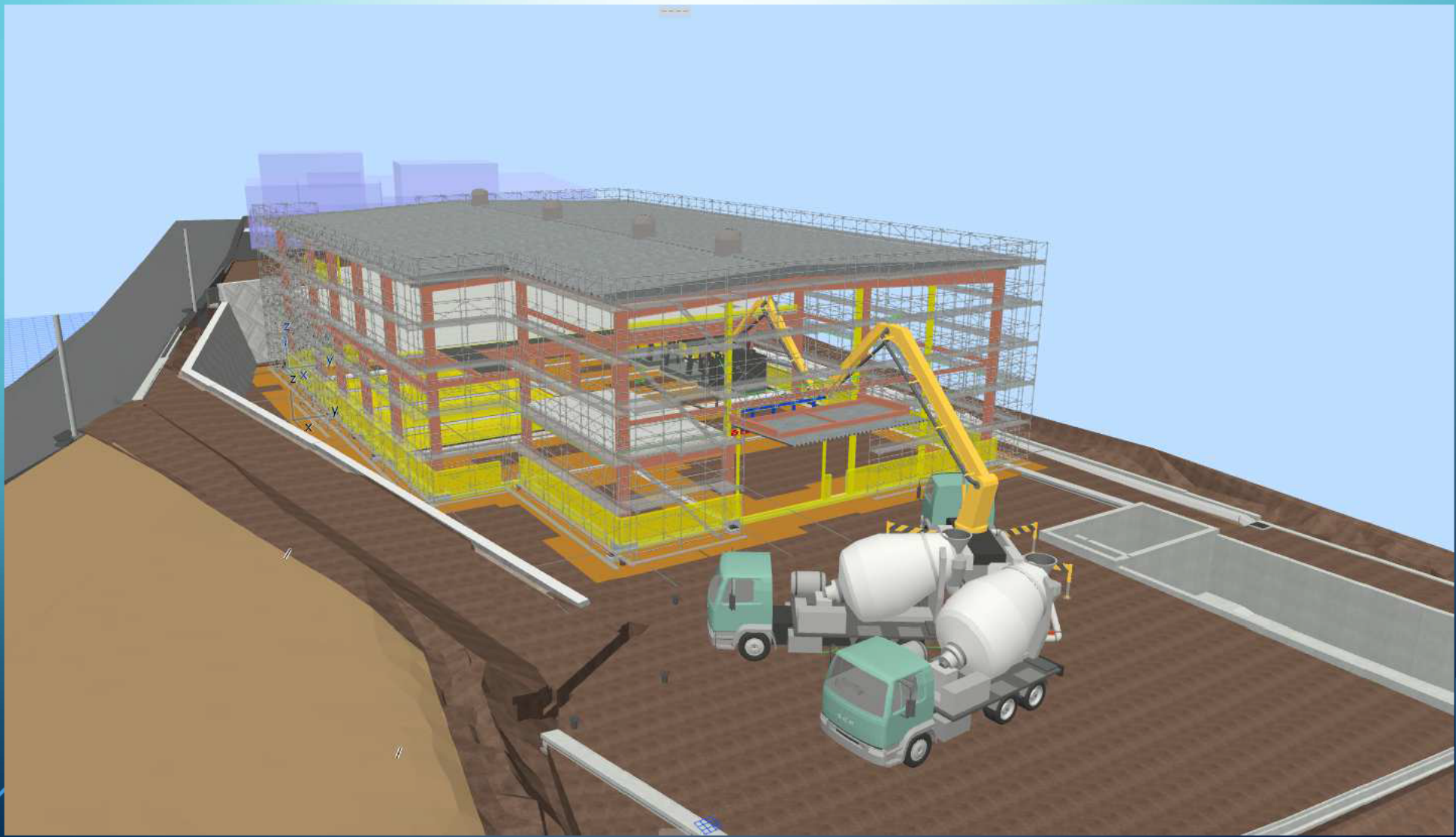
屋根伏せ



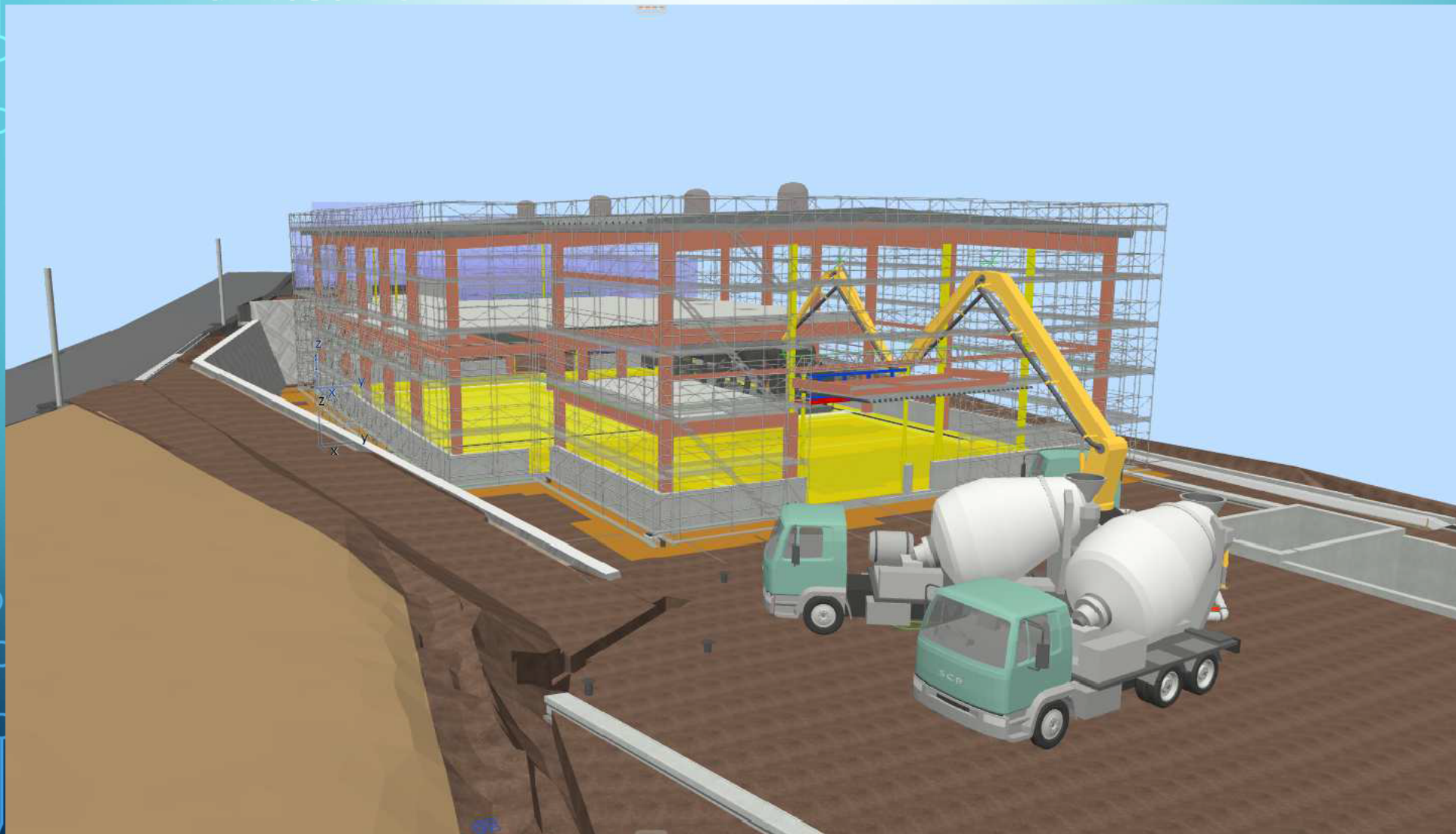
2F デッキCON打設



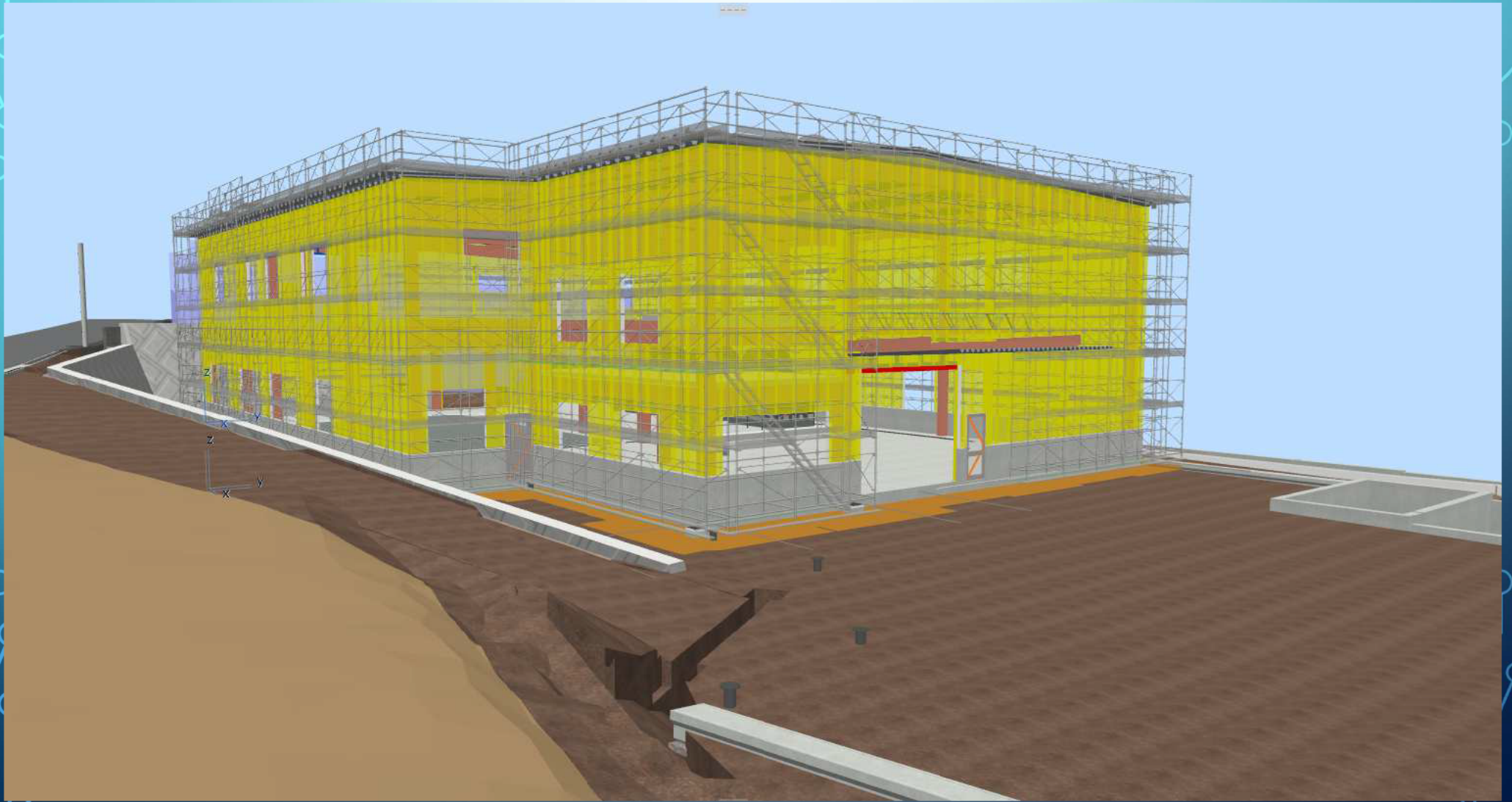
腰壁・ピット底CON打設



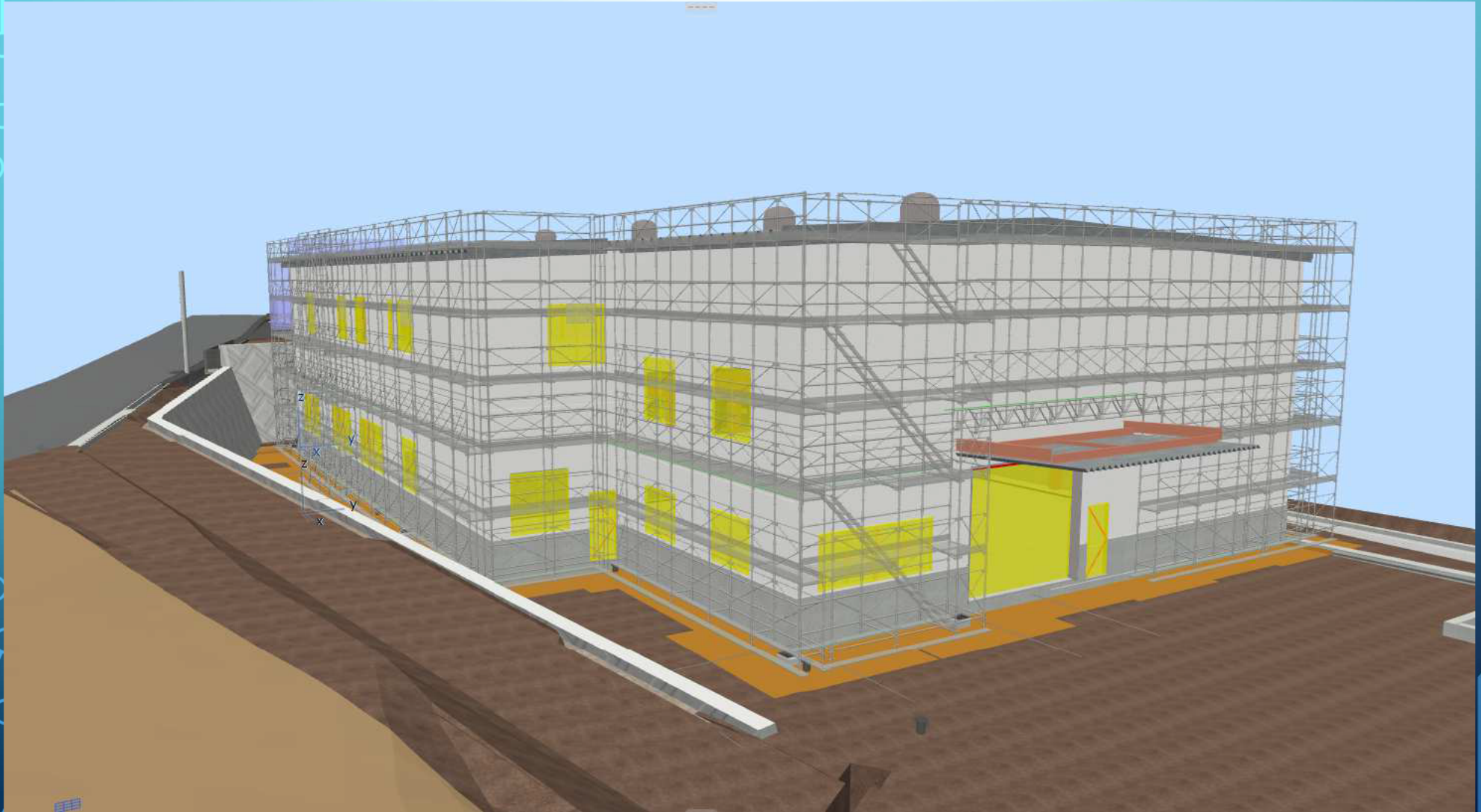
宅内側溝設置 土間CON打設



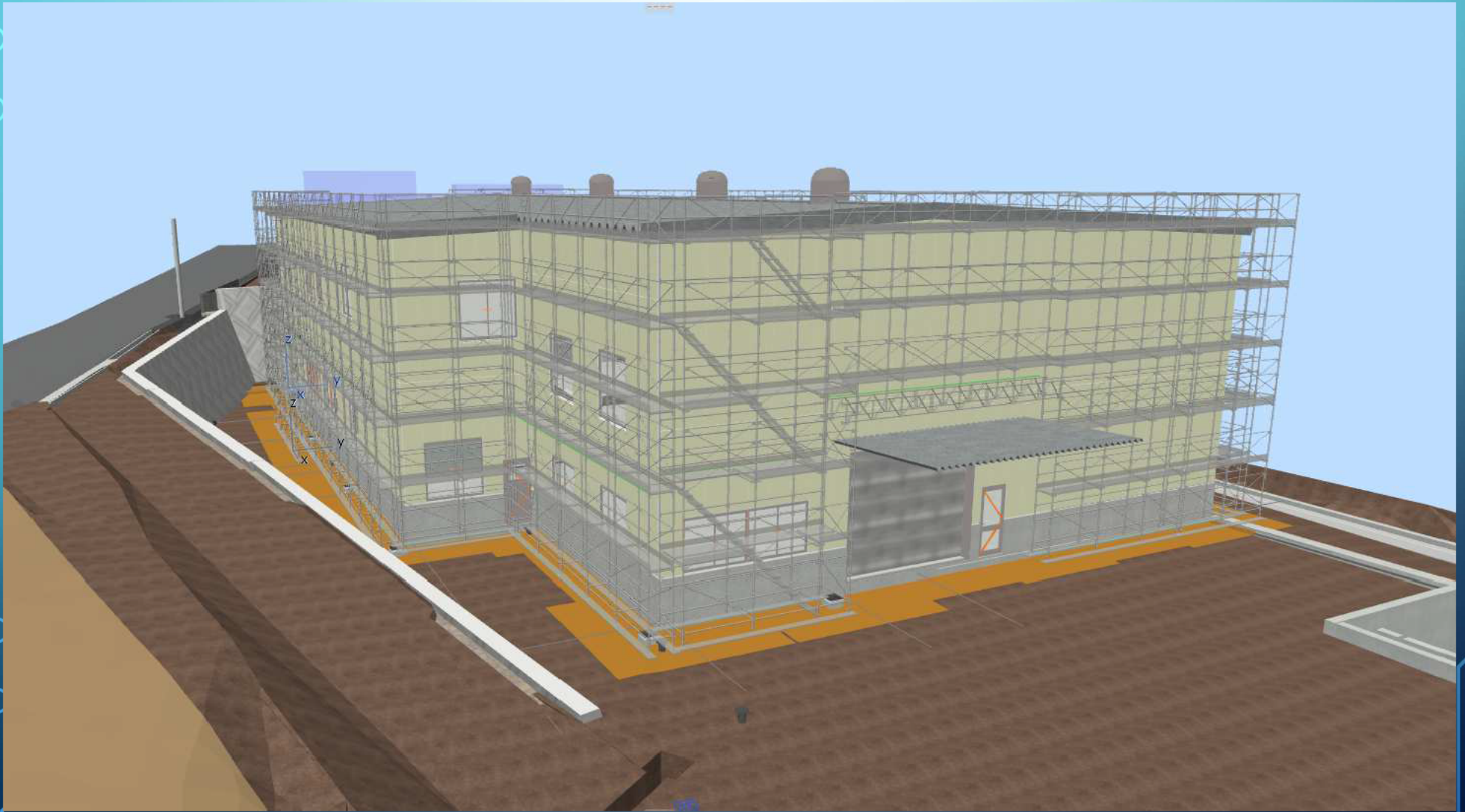
ALC建边



建具・シャッター取付



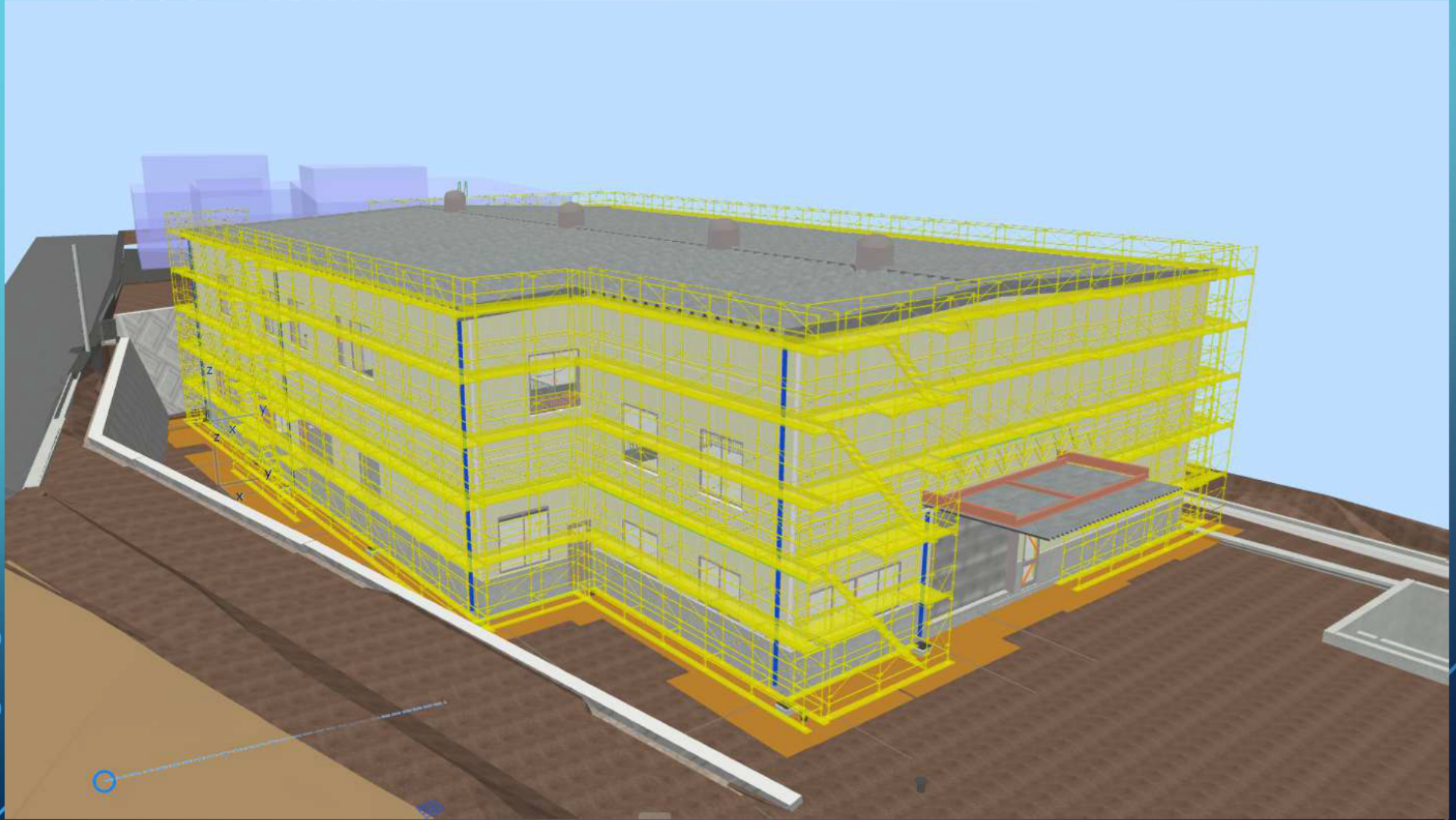
外装仕上げ工事



内装仕上げ工事



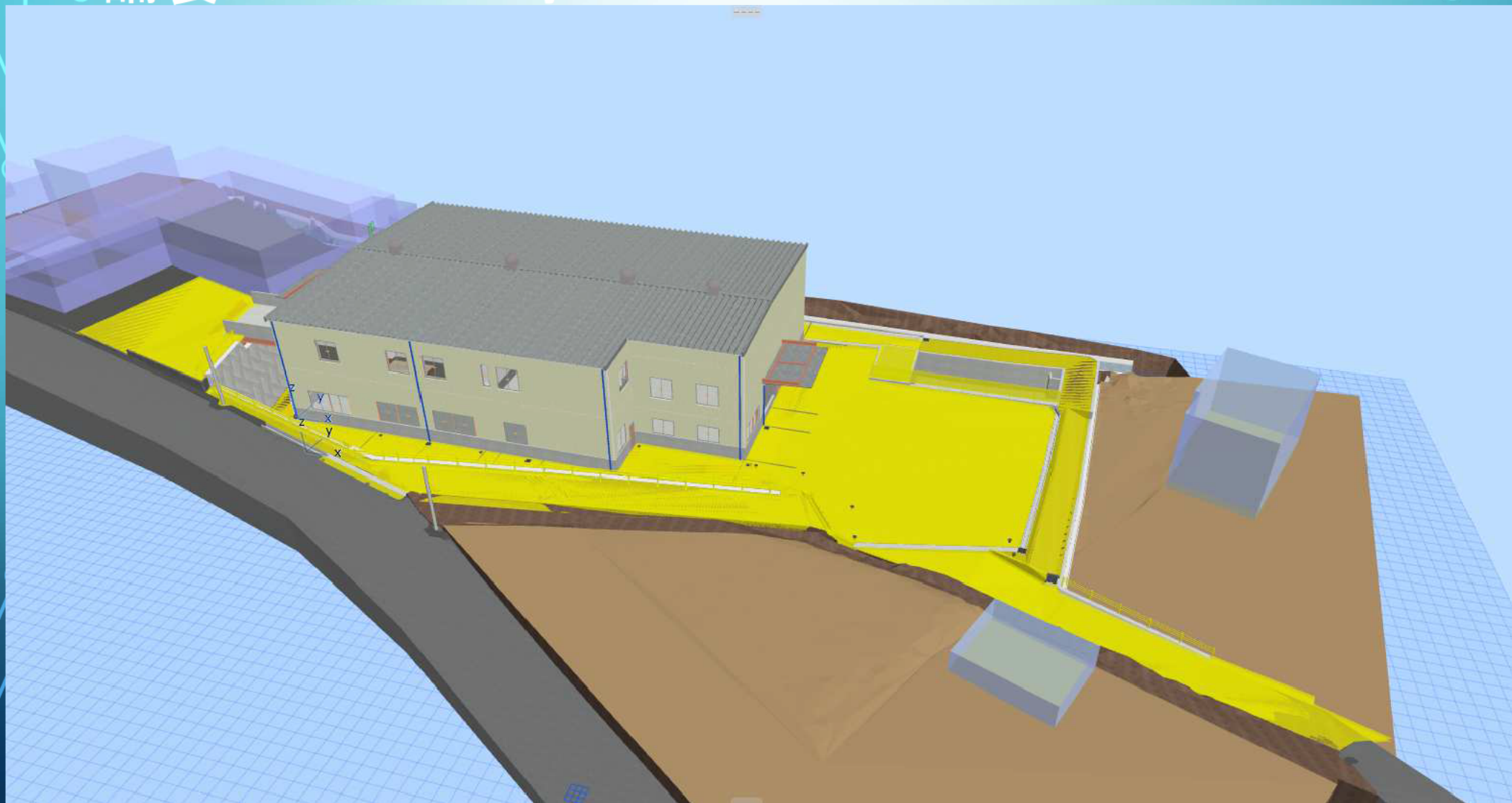
外部足場解体



外部足場解体完了



舗装 フェンス工事



工事完成

